

Uni

ESSENTIAL DESIGN

Uni is the guest chair characterised by minimal and elegant design that can be adapted to any space.

The sled frame in high-resistance steel tube with armrests integrated to the structure supports the comfortable padded seat and the upholstered back in injected polypropylene.

TWO VERSIONS, SAME COMFORT

Uni collection is available in two versions: a version with medium-high back and a version with high back.

In both models, the seat pad is in flexible cold injected polyurethane foam, crushproof, with "Comfort-Air" technology, ensuring utmost comfort.

ELEGANT ALSO IN THE DETAILS

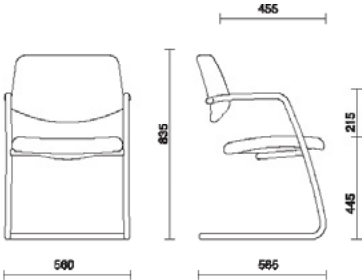
Uni outer structure in steel tube is available chromed or painted in matt black.

The armrests integrated to the seat match the structure and can be upholstered with a top in the same material of the armchair upholstery.

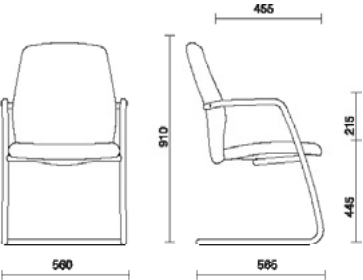


Models and dimension

VISITOR CHAIR MEDIUM BACK

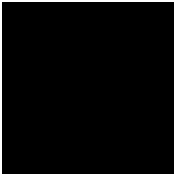


VISITOR CHAIR HIGH BACK

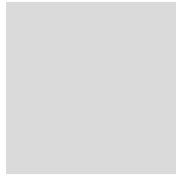


Colours, materials, finishing

STRUCTURE FINISHING



Black MAT painted steel

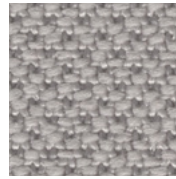


Chromed steel

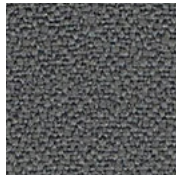
SEAT UPHOLSTERIES



BN Fabric 10 Colours



AL Fabric 9 Colours



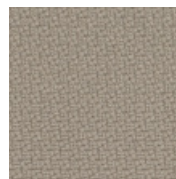
AB Fabric 13 Colours



ME Fabric 13 Colours



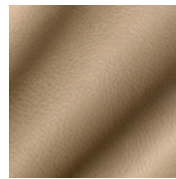
IP Fabric 13 Colours



ST Fabric 12 Colours



SY Fabric 11 Colours



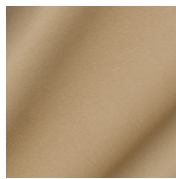
CI_CX Ecological leather 13 Colours



N Ecological leather 13 Colours



S Leather 13 Colours



TS Leather 13 Colours

PCON.PLANNER

It is possible to configurate our model Uni by using pCon.planner program for the design of 2D an 3D environment.

pCon.planner allows to design working solutions in a fast and intuitive way, creating "realistic" images with advanced features, with a considerable saving of time and resources.

It is easy to start using pCon.planner: after downloading the software in the proper page, it is possible to download pCon. catalog, the practical online catalogue of products ready to be set up according to anyone's need, and then include the products in the projects.

For more information on the use of pCon. planner and the access to the products of the SitLand's catalogues, please contact com@sitland.com

WARRANTY

Uni has 5 years warranty.
For any further detail, please contact Sitland's customer service at service@sitland.com



MORE INFORMATION

Sitland spa reserves the right to make modifications and improvements of a technical or aesthetic nature to the products at any time without notice.

Photos and colours shown are used for reference only and may look different in reality.

Please refer to the Price list in force and to the General sale conditions for the colours and the combinations available for every single product.

For any further information, please contact our Customer Service at service@sitland.com



UNI EN 1022 CERTIFICATION

Uni comply with the norm UNI EN 1022.

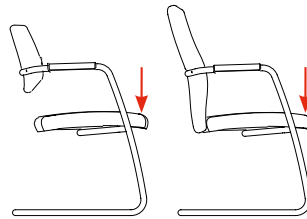
The tests performed are



on Uni with high back and Uni with medium back.

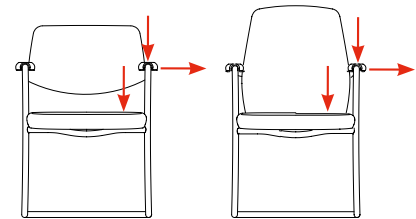
TILT TOWARD THE FRONT

Seat load: 600 N
Horizontal force: 20 N



LATERAL TIPPING

Seat load: 250 N
Armrest load: 350 N
Horizontal force: 20 N



TIPPING BACKWARDS

Seat load: 600N
Horizontal force: 164 N

