

---

# Path



Path, designed by Dorigo Design, is an innovative system of modular sofas, consisting of four modules, either straight, convex and concave, which can be teamed together in endless composition possibilities, to furnish any type of space with creativity and original freedom. The internal steel structure features springs and elastic belts for guaranteed comfort and durability. The upholstery is available in leather, eco-leather or fabric, in a host of different colours.

## Projects

**WBF**, Milano, Italy (2013)

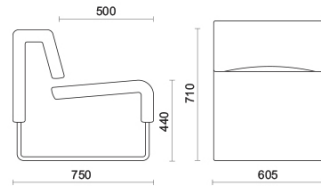
**VimpelCom**, Mosca, Russia (2011)

**Bard College**, New York, United States (2017)

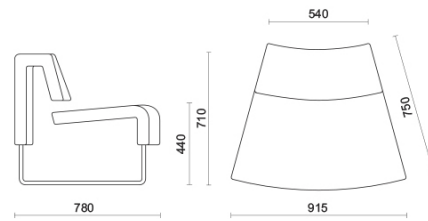
**Vilnius Bankas**, Vilnius, Lithuania (2011)

## Models

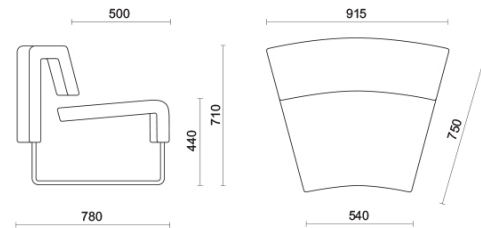
1 seater  
modular unit



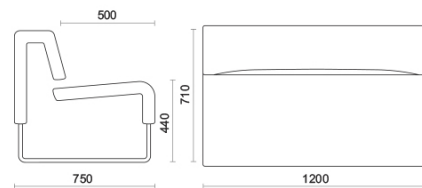
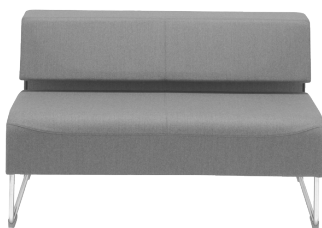
1 seater  
modular unit -  
convex



1 seater  
modular unit -  
concave



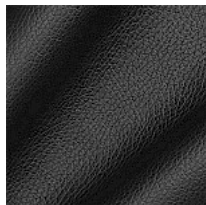
2 seater  
modular unit  
standard



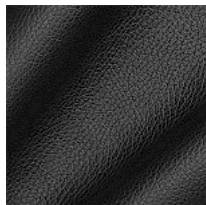
---

## Materials and colours

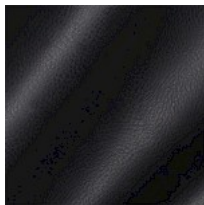
### Upholstery



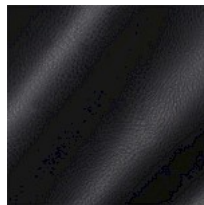
Leather S + Faux leather N  
Available colours 13



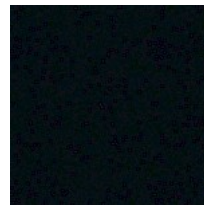
Faux leather N  
Available colours 13



Faux leather CX  
Available colours 13



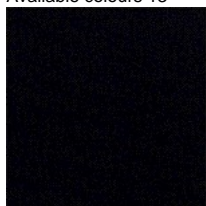
Faux leather CI  
Available colours 13



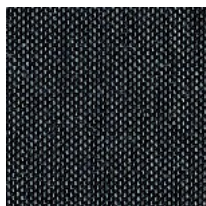
Fabric SY | Sinergy  
Available colours 11



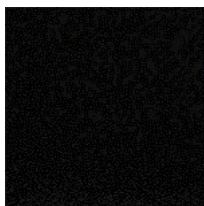
Fabric ME  
Available colours 13



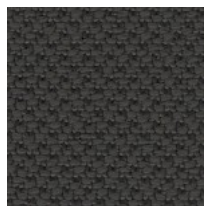
Fabric IP  
Available colours 13



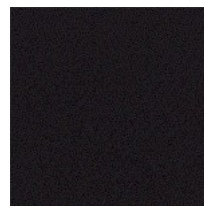
Fabric CL | Clara 2  
Available colours 10



Fabric BN  
Available colours 10



Fabric AL | Alba  
Available colours 9



Fabric AB  
Available colours 13

**Questo prodotto è garantito 5 anni.** Sitland Spa si riserva di apportare modifiche e/o migliorie di carattere tecnico ed estetico ai propri modelli e prodotti in qualsiasi momento e senza preavviso. Le foto e i colori visualizzati sono puramente indicativi e possono variare rispetto alla realtà. Per maggiori informazioni si prega di contattare il nostro Servizio Clienti [service@sitland.com](mailto:service@sitland.com)