



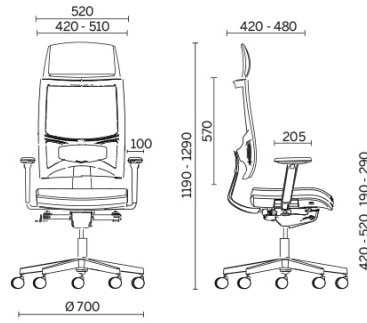
An aid to movement, with a synchronised system of adjustment of the angle between seat and back, with a selection of five positions and anti-shock system. Team Strike is a seat that can be adjusted as required. Designed to reduce muscle fatigue and ensure correct posture, it also has adjustable lower back support, a breathable back and shape-retaining upholstered seat with Comfort-Air technology.

## Projects

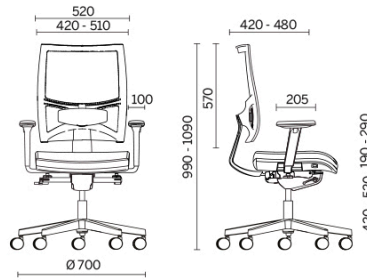
- Paul's Barkleys**, London, United Kingdom (2011)
- ABI**, Milano, Italy (2011)
- Tinkoff Credit System**, Mosca, Russia (2012)
- Epsilon**, Parigi, France (2017)
- Ernst&Young**, Warszawa, Poland (2011)
- London & Partners**, London, United Kingdom (2015)
- Bane Nor**, Oslo, Norway (2019)

# Models

Executive



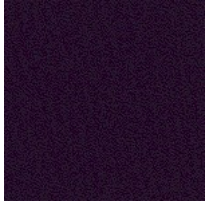
Manager



---

## Materials and colours

### Seat Upholstery



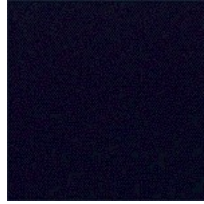
Fabric AB  
Available colours 13



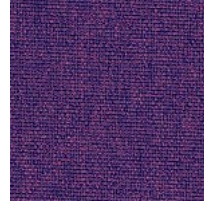
Fabric AL | Alba  
Available colours 9



Fabric BN  
Available colours 10



Fabric IP  
Available colours 13



Fabric ME  
Available colours 13



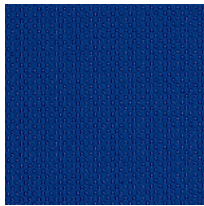
Fabric ST | Step  
Available colours 12



Fabric SY | Sinergy  
Available colours 11



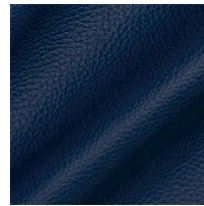
Mesh RY | Rhythm  
Available colours 5



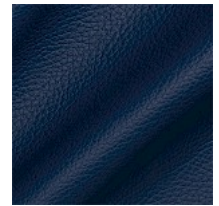
Mesh RR  
Available colours 10



Faux leather CI  
Available colours 13



Faux leather N  
Available colours 13

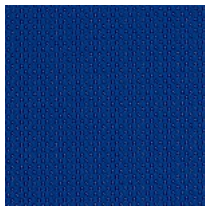


Leather S + Faux leather N  
Available colours 13

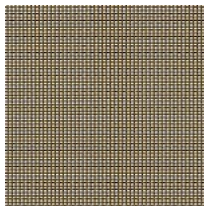
### Back Upholstery



Mesh RY | Rhythm  
Available colours 5



Mesh RR  
Available colours 10



Mesh RP  
Available colours 6



Mesh RF  
Available colours 5